

Beaver Cast Iron Flanged Y-Strainer

A strainer used in used in a variety of industrial applications to mechanically remove unwanted solid particles from flowing media.

S11



Beaver S11 Cast Iron Flanged Y-Strainer



Beaver S11 Y-Strainer

The Beaver S11 Y-Strainer has flanged cast iron body and stainless steel filter basket that captures solids and removes them from the flowing liquid, steam, or gas. The mesh filter has a standard aperture size of 1.5mm for DN50–80 and 3mm for DN100–600. Custom sizes are also available on request.

The cast iron body is an economical choice for large pipelines that aren't subject to high thermal or mechanical shock. This Beaver Y-strainer is rated to 16 bar.

KEY FEATURES

- Protects expensive or vulnerable downstream equipment from damage and contamination caused by sediments or debris.
- Well-fitted and aligned filter efficiently filters particles.
- Contoured body shape allows flow of fluid while minimising pressure drops.
- Can be used in a horizontal or vertical position with the filter oriented downwards.
- Threaded drain port with bolted cover gives easy access to the mesh screen for cleaning.

Need technical advice? Our friendly specialists are here to help.

S11

Cast Iron Flanged Y-Strainer

Tables 1–2. S11 Specifications

Technical Specifications		Material Specifications	
Brand	Beaver	Body	A126B cast iron A536 65-45-12 ductile iron
Model	S11	Bonnet	A126B cast iron A536 65-45-12 ductile iron
Size	DN50–600 (2–24")	Screen	304 or 316 stainless steel
Pressure rating	16 bar	Bonnet gasket	304 or 316 stainless steel with graphite, EPDM, or NBR
End connections	Flanged to suit ASME CL125/150 and AS2129 Table D/E	Plug	304 or 316 stainless steel
		Bolt	304 or 316 stainless steel
		Washer	304 or 316 stainless steel

Diagram. S11 Parts

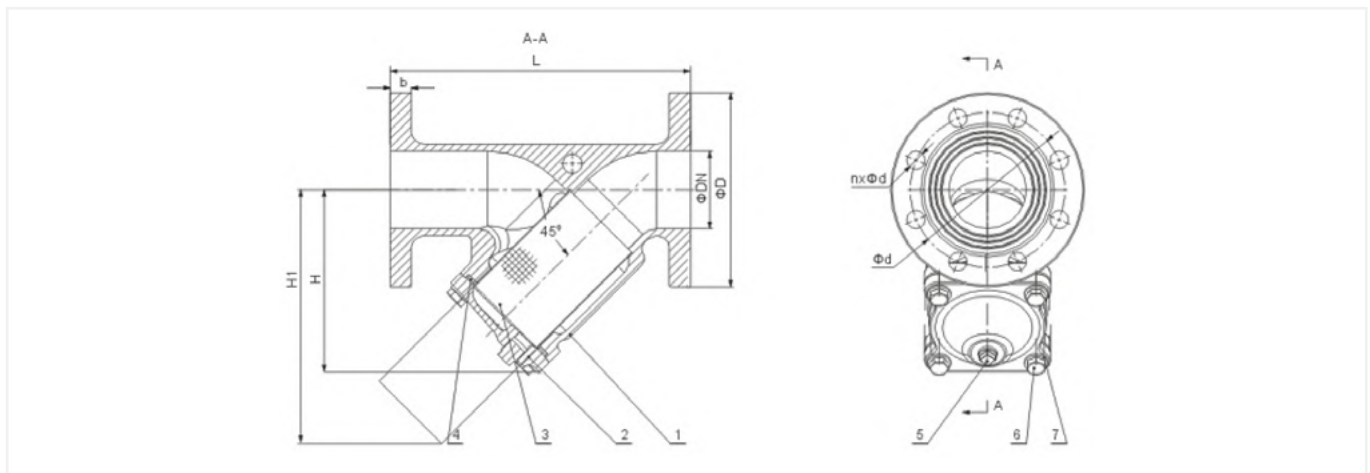


Table 3. S11 Dimensions

Product Dimensions (mm)										
DN	L	AS2129 Table D			AS2129 Table E			b	H	H1
		D	D1	nxD	D	D1	nxD			
50	225.4	150	114	4x18	150	114	4x18	17	137	181
65	273	165	127	4x18	165	127	4x18	17	165	225
80	292	185	146	4x18	185	146	4x18	19	190	266
100	352.4	215	178	4x18	215	178	4x18	19	220	295
125	416	255	210	8x18	255	210	8x18	21	261	358
150	470	280	235	8x18	280	235	8x22	21	307	429
200	643	335	292	8x18	335	292	8x22	22	378	558
250	660.4	405	356	8x22	405	356	12x22	30.2	438	657
300	762	455	406	12x22	455	406	12x26	31.8	511	769
350	946.3	525	470	12x26	525	470	12x26	35	610	890
400	1079	580	521	12x26	580	521	12x26	36.6	690	1009
450	1168	640	584	12x26	640	584	16x26	39.7	753	1114
500	1275	705	641	16x26	705	641	16x26	42.9	870	1295
600	1418	825	756	16x30	825	756	16x33	47.7	1025	1530



We're here to help

We know it's important for you to talk to someone who knows their stuff. So if you have technical questions or need help choosing the right products, talk to our team. We'll walk you through our proven problem solving process.

1. Tell us what you need.

Tell us about your project. What do you want to achieve? What problems do you need to overcome? Let's work back from there.

2. Choose the right solution.

Weigh up the options. We'll do the analysis, discuss the options with you, and make a recommendation—the choice we'd make in your shoes.

3. Get the job done.

Complete your project, with the right products, on time and to spec. We've got your back all the way, with support during installation and commissioning.

Tap into our expertise and talk to our friendly, expert team.

B | E | A | V | E | R

To request a quote or explore our product range, visit beaverprocess.com.au

Phone: 1300 295 799 | Email: sales@beaverprocess.com.au