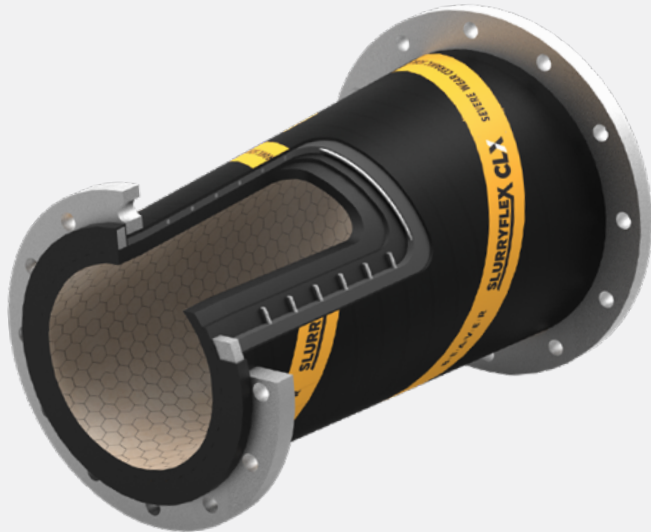


XD-Series

Specialty Concentric/Eccentric Reducer Ceramic Hose



Slurryflex CLX XD-Series concentric/eccentric reducer ceramic hose suitable for suction and discharge duty. Designed and manufactured in Australia, it is the ultimate solution for severe wear slurry applications where flexibility is required.

It allows for movement and misalignment, and ease of installation and replacement. Typical applications include high-wear slurry in mineral processing plants, dredging, and slurry pipelines. Fully customisable with special engineered designs available on request.

The CLX composite ceramic/rubber liner system exhibits both the very high wet sliding abrasion resistance of ceramic combined with the very high energy rebound and dispersion of rubber. This combination provides ultimate performance in severe slurry applications, particularly for medium impingement angle (10–45°) wear, such as bends and fittings.

Technical Specifications

Hose size	DN80–1500 (3–60") as standard
Hose length	To suit requirements (see table)
Pressure rating	-100kPa to +5000kPa (-14.5psi to +725psi) Higher on request
Temperature rating	-30°C to +75°C for Slurryflex Grade A rubber + CLX ceramic
CLX internal coverage	Cross-section: full 360° as standard Longitudinal: full length as standard
End connections	Plain end Flanged (fixed or swivel) Flanged full spigot (fixed or swivel) Double flanged Grooved (roll or cut) Threaded Butt weld Custom
Flange types	AS2129, ASME B16.5, ASME B16.47, AWWA C207, AS4087, BS EN 1092, BS3293, JIS B2220, SANS 1123, DIN ISO 7005, custom
Groove types	AWWA C606 OGS, Victaulic AGS, custom
Thread types	BSP, NPT, API, premium, custom
Safety factor	4:1 as standard
Extra options	Custom nozzles, branches, or connections Wear monitoring system (plug-only or push-button)

Material Specifications

Inner liner	Slurryflex Grade A rubber + CLX ceramic (for severe wear slurry) Slurryflex ASR rubber + CLX ceramic (for acidic slurry) Slurryflex OSR rubber + CLX ceramic (for oil sands slurry) Slurryflex HSR rubber + CLX ceramic (for high-temp slurry) Slurryflex + CLX custom formulation
CLX ceramic	CLX standard (92% alumina, with 1x wear resistance and 1x fracture toughness) CLX-A95 (95% alumina, with 2x wear resistance and 1x fracture toughness) CLX-A99 (99% alumina, with 4x wear resistance and 1.1x fracture toughness) CLX-ZTA (zirconia-toughened alumina, with 4.4x wear resistance and 1.4x fracture toughness) CLX-ARZ (alumina-reinforced zirconia, with 6.6x wear resistance and 2x fracture toughness)
Reinforcement	Synthetic fabric and wire helix
Outer cover	UV, ozone, and abrasion-resistant rubber
End connections	Carbon steel (painted, galvanised, custom) Stainless steel (SS304, SS316) Exotic alloy

Standard Properties

DN	Hose Size		CLX Ceramic Thickness		Vacuum Rating	Standard Working Pressure		Max Working Pressure		Face-to-Face Length		
	in	mm	Min/Std (mm)	Max (mm)	%	kPa	PSI	kPa	PSI	Min (mm)	Std (mm)	Max (mm)
80	3	76	4.5	4.5	100	1000	150	5000	725	279	295	No limit
100	4	102	4.5	6	100	1000	150	5000	725	291	308	No limit
125	5	127	4.5	6	100	1000	150	5000	725	317	333	No limit
150	6	152	4.5	6	100	1000	150	5000	725	333	346	No limit
200	8	203	4.5	12	100	1000	150	5000	725	351	358	No limit
250	10	254	4.5	12	100	1000	150	5000	725	380	404	No limit
300	12	304	4.5	12	100	1000	150	5000	725	409	461	No limit
350	14	355	4.5	12	100	1000	150	5000	725	542	604	No limit
400	16	405	4.5	12	100	1000	150	5000	725	579	662	No limit
450	18	457	4.5	12	100	1000	150	5000	725	620	687	No limit
500	20	508	4.5	12	100	1000	150	5000	725	768	814	No limit
550	22	565	4.5	12	100	1000	150	5000	725	771	814	No limit
600	24	610	4.5	12	100	1000	150	5000	725	778	814	No limit
650	26	660	4.5	12	100	700	100	4000	580	916	916	No limit
700	28	711	4.5	12	100	700	100	4000	580	924	1016	No limit
750	30	762	4.5	12	100	700	100	4000	580	930	1016	No limit
800	32	813	4.5	12	100	700	100	3000	435	943	1016	No limit
900	36	914	4.5	12	100	700	100	3000	435	962	1016	No limit
1000	40	1016	4.5	12	100	700	100	3000	435	962	1116	No limit
1100	44	1118	4.5	12	100	700	100	2500	362	984	1116	No limit
1200	48	1219	4.5	12	100	700	100	2500	362	997	1116	No limit
1300	52	1321	4.5	12	100	700	100	2500	362	1013	1216	No limit
1400	56	1422	4.5	12	100	700	100	2500	362	1029	1216	No limit
1500	60	1524	4.5	12	100	700	100	2500	362	1044	1216	No limit

Notes

1. Product is fully customisable and available in non-standard specifications on request.
2. CLX internal coverage for "cross-section" refers to CLX tile pad coverage around the hose inside diameter (i.e. X degrees, from Y o'clock to Z o'clock).
3. CLX internal coverage for "longitudinal" refers to CLX tile pad coverage down the length of the hose (i.e. starting X mm from end 1 and finishing Y mm from end 2).
4. Safety factor is the ratio of working pressure to minimum rated burst pressure.
5. Minimum face-to-face length for a hose with a swivel flange (beaded) ASME CL150, standard working pressure.